

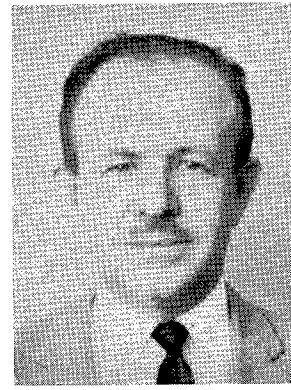
Frantz Vandenheuvel



Noel Kuhrt



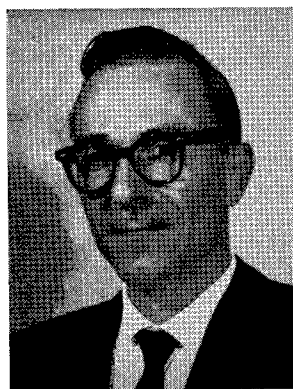
Nicholas Pelick



J. W. Shigley

USE OF TLC IN LIPID CHEMISTRY

A Short Course at The Pennsylvania State University, July 24-29, 1966



George Rouser

The technique of thin-layer chromatography has been responsible in many ways for the rapid growth in lipid chemistry. It is now considered by many to be an indispensable tool. One of the most effective means by which the vast amount of information available in TLC of lipids can be brought before the research community is in the form of a short course, carefully organized to present TLC procedures in lipid chemistry in conjunction with other techniques. The course at Penn State this year will em-

phasize the use of TLC as an aid to other methods. There will be demonstrations of new techniques and equipment; all students will have a chance to be active in the program.

Arrangements for the Short Course are under the direction of George Rouser and F. Vandenheuvel, co-chairmen of the Organizing Committee; Noel Kuhrt, chairman of the Education Committee; and Nicholas Pelick, chairman of local arrangements. Chairman of the group sponsoring AOCs at Penn State is J. W. Shigley, Associate Professor of Biochemistry, College of Science.

The Short Course Program

MONDAY

Morning: General Techniques, a round-table discussion by the participants and students on mechanics of thin-layer chromatography.

Afternoon: New Techniques in the TLC of Radioactive Lipids.

F. Snyder, Oak Ridge Institute of Nuclear Studies.

New Techniques in the Determination of the Structure in Isomer Analysis of Unsaturated Fatty Acids.

O. S. Privett, Hormel Institute, and *R. Wood*, Oak Ridge Institute of Nuclear Studies.

Evening: Social Mixer and Smorgasbord.

TUESDAY

Morning and

Afternoon: Steroid Separations and GLC Analysis of Preparative TLC Lipid Fractions.

F. Vandenheuvel, Canada Department of Agriculture

Evening: TLC in Food Research (composition)
M. R. Sahasrabudhe, Food and Drug Directorate, Canada

Lecture on TLC Foodstuffs (additives and adulterants)

L. Stoloff, Food and Drug Administration

WEDNESDAY

Morning: Quantitative Analysis of Lipids by TLC via Charring, Densitometry and Associated Methods.

E. M. Sterns, Hormel Institute

Afternoon: Molecular Species Analysis of Triglycerides and Glycerol Phosphatides.

O. S. Privett and *L. J. Nutter*, Hormel Institute

Evening: TLC of Bacterial Lipids

M. Kates, National Research Council, Ottawa

THURSDAY

Morning and

Afternoon: Thin-Layer and Column Chromatographic Separations of Phospholipids and Glycolipids in Conjunction with Other Techniques.

G. Rouser, City of Hope Medical Center

Evening: Application of Precoated TLC Sheets to the Analysis of Lipid Classes.

A. D. Baitsholts, Distillation Products Industries

FRIDAY

Morning: Gas Chromatographic Techniques as an Adjunct to the Quantitative Analysis of Complex Lipids by TLC.

G. Feldman, Baylor University

Afternoon: TLC of Plant Lipids with Particular Reference to Deacylation Techniques.

M. Lepage, Canada Department of Agriculture

Travel Information

Penn State is located directly in the center of Pennsylvania at State College, some 40 miles east of Altoona and 30 miles west of Lewistown. Air travel information is available from Allegheny Airlines, which services the State College area through the Mid-State Airport near Phillipsburg, Pa. Airline connections are available from Pittsburgh and New York. Some alternative travel suggestions are:

a) Private car

b) Allegheny Airlines to Mid-State Airport

(Continued on page 254A)

*soybeans
cottonseed
flaxseed
safflower
copra
linseed
castor beans
sesame seed
rape seed
fish scrap
plastics*

STATIONARY BASKET EXTRACTOR

26 NOW IN OPERATION

processing 50 to 1500 tons daily



In 1960 our first SBE went into operation on soybeans—utilizing a completely revolutionary and patented extraction process. In the few years since then, 26 units have been put in service, processing 10 different types of material. And the future applications for this universal extractor seem unlimited.

If you are plagued by low tonnage capacities and high operating costs, take a good look at SBE. We'd be happy to provide detailed information. For a start, you might like to have our illustrated Stationary Basket Extractor bulletin, 08-45B. Please direct your letter to our SOLVENT EXTRACTION DIVISION.

FRENCH

U.S.A.

F072

THE FRENCH OIL MILL MACHINERY CO. • PIQUA, OHIO 45356



This expansive view of the central skyline of Philadelphia is oriented from the terrace of the Museum of Art, looking down the Benjamin Franklin Parkway.

Industry and Culture— Unity in Philadelphia

Historic Site for AOCs Fall Meeting

AS A COUNTERBALANCE to the fine spring meeting in the West, it is now time to reorient our thinking. And what better orientation than a turning toward the East? The Philadelphia Committee, whose pictures appeared in the May JAOCs, emphasize the many advantages of Philadelphia, not only in its history and charm, but more importantly as the blooming industrial center of the Delaware Valley. Having publicized the meeting widely in this country and on the continent, the Committee offers a strong technical program complemented by up-to-the-minute exhibits and social doings that should delight both men and women. The 40th Fall Meeting will be both worthwhile and memorable. *Make your plans to be in Philadelphia for Oct. 2-5, 1966.*

Diversified Technical Program Emphasizes Original Research

W. C. Ault, Technical Program Chairman, is planning a program which emphasizes original research papers, while simultaneously covering several topics in considerable depth. Because of the location of Philadelphia on the Eastern seaboard, substantial participation by European scientists is also being planned. Many of the outstanding European investigators have already planned to be present.

Speakers planning to present papers on any phase of the chemistry, biochemistry or industrial development of fats and oils are asked to send their title, authors' names, speakers' names and a 100-300 word abstract to: Waldo C. Ault, U.S. Department of Agriculture, Agricultural Research Service, Philadelphia, Pennsylvania 19118.

Even though the deadline is July 5th, an early filing of the above information will greatly facilitate the work of the Program Committee and help insure your presentation a favorable place on the program.

Planning for Highest Attendance

Anticipating that the total program will bring a record attendance to the town, E. J. Saggese and his Hotel Committee have secured particularly good accommodations for all facets of the Meeting. The Bellevue-Stratford has blocked a large supply of rooms for delegates, and has provided fine facilities for registration, technical sessions, exhibits, committees, and entertainment. Spacious lounges will be available for both men and women registrants, and coffee will be provided in the exhibit area for all.

The Entertainment Committee, headed by Frank Scholnick, promises every member and his lady several evenings of gaiety. The scheduled events include the regular

Sunday night mixer, a social gathering on Monday night provided by Distillation Products and Eastman Chemical Products, Inc., and Tuesday's gala banquet and night-club show culminating in dancing 'til midnight to the music of Charles Gresh and his orchestra.

The members of the Entertainment Committee have gone all out to prepare a number of surprises for attendees. Refusing to let the cat out of the bag, no more can be said except, "Don't miss the 40th for a generous helping of hospitality in the City of Brotherly Love!"

Penn State Short Course . . .

(Continued from page 252A)

- e) The Pennsylvania Railroad to Lewistown and bus connections to State College.

These three means of transportation are listed in the order of their convenience. There is limousine service available directly to the conference center from Mid-State Airport.

The clothing worn at the Short Course is quite informal. The usual apparel is jackets or sweaters, or short-sleeves, weather permitting.

Accommodations are available for wives who wish to accompany their husbands and for children at least 5 years of age. All such requests should be made at the time the attendance application is submitted because these accommodations, limited in number, will be assigned in the order that specific requests are received. No pets will be permitted in the dormitories.

The Course will be held at the newly constructed Orvis Keller building auditorium which is completely air-conditioned.

Membership in the Society is not a requirement for attendance. The registration fee is \$100, plus room and board, \$35. The program will be held in the new Orvis Keller building on the beautiful Penn State campus. So far, no limit has been set to attendance. Preregister at the earliest possible time.

Exhibitors at TLC Short Course

Commercial suppliers of TLC equipment and accessories will be on hand at the Penn State Short Course to exhibit their wares. He is a tentative list of the exhibitors:

- Analtech*—precoated TLC plates and silica gel columns.
- Applied Science Laboratories*—Adsorbosil TLC silica gel products and preparative TLC equipment and accessories.
- Brinkmann Instruments*—Silica Gel G and other E. Merck products, precoated plates and TLC equipment.
- Distillation Products Industries*—Precoated sheets for TLC and developing kit.
- Gelman Instrument Company*—Instant TLC materials and equipment.
- Mallinckrodt Chemical Company*—SilicAR TLC and column adsorbents and developing kit.
- Quickfit Reeve Angel*—Whatman TLC adsorbents and accessories.

If more information is needed, contact Carl Hauber at our Chicago office, or Nicholas Pelick at Applied Science Laboratories in State College, Pa.

See you at the Short Course!

American Soybean Association 1966 Session in Ames, Iowa

The 46th Annual Convention of the American Soybean Association will be held at the Fort Des Moines Hotel, Des Moines, Iowa, Aug. 17-19, 1966.

Two days of formal sessions will be followed by a field trip to the Iowa State University agronomy farm near Ames on the third day of the convention. Soybean producers from all over the Midwest, the Midsouth and the South are expected.

Additional information can be secured from G. M. Strayer, Executive Vice-President and Secretary-Treasurer, American Soybean Association, Hudson, Iowa.